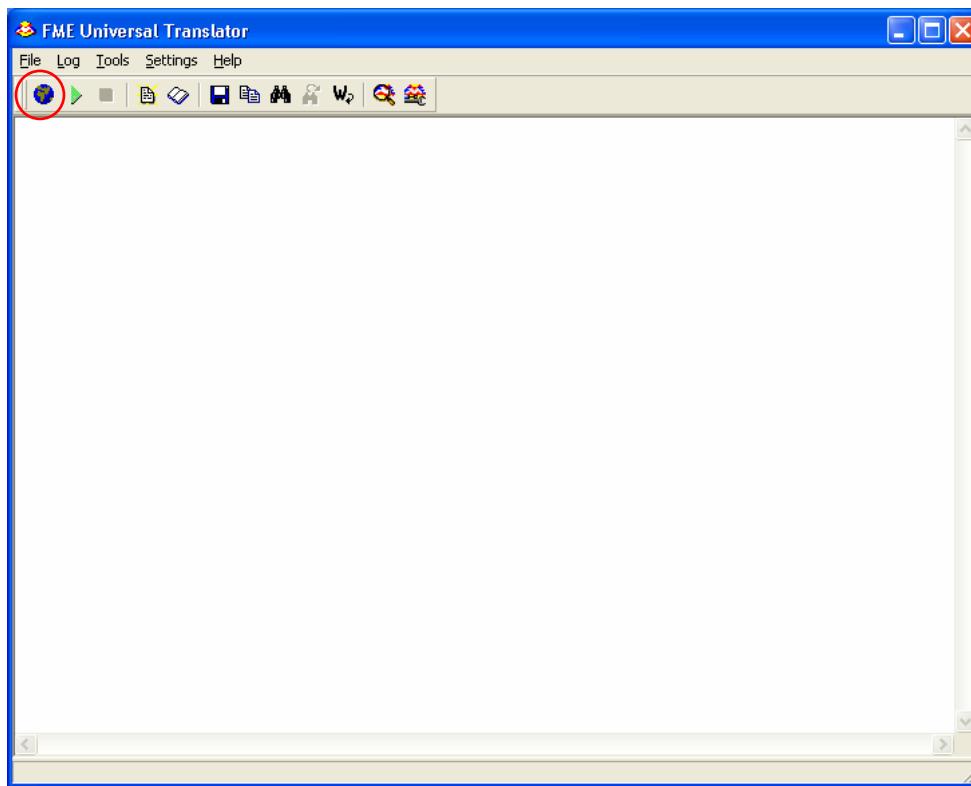


## Converting Geospatial / GIS Data into CAD and Other Formats using FME Universal Translator<sup>1</sup>.

The following set of instructions walks you through the process of converting geospatial data into CAD format using FME Universal Translator.

1. Launch **FME Universal Translator**  FME Universal Translator
2. Open the **Select Translation Parameters** window, using the **Translate Data** button on the toolbar as in Figure 1.



**Figure 1.**

Alternatively, you can right-click on the file's icon and select **Translate with FME Translator**. The FME Universal Translator and Set Translation Parameters windows will appear. See Figure 2.

---

<sup>1</sup> For information or access to FME Universal Translator, please contact [gis.maps@utoronto.ca](mailto:gis.maps@utoronto.ca)

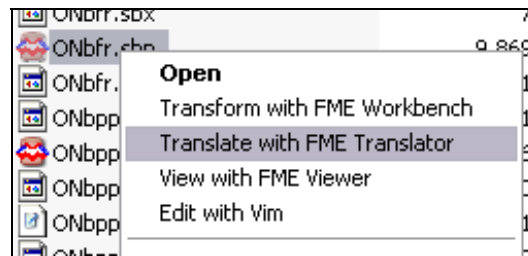


Figure 2

3. Set up the **Source** of the file to be converted (Figure 3).

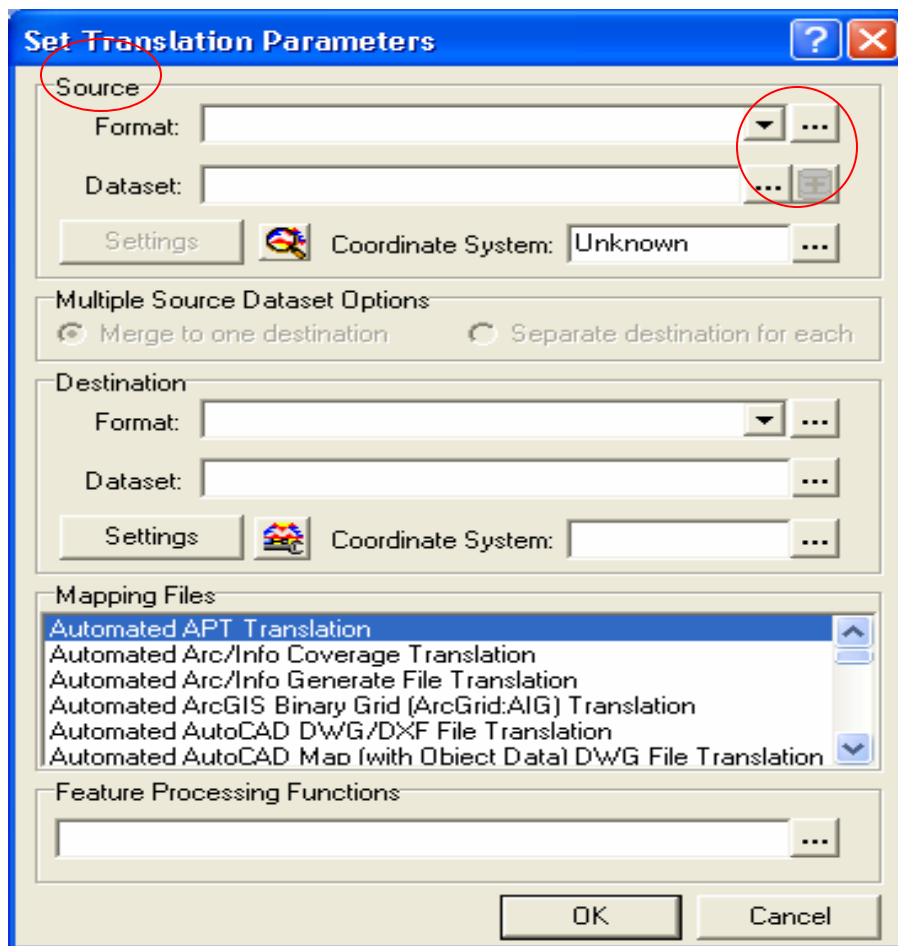


Figure 3.

a. Choose a **format** of your original file (Figure 4).

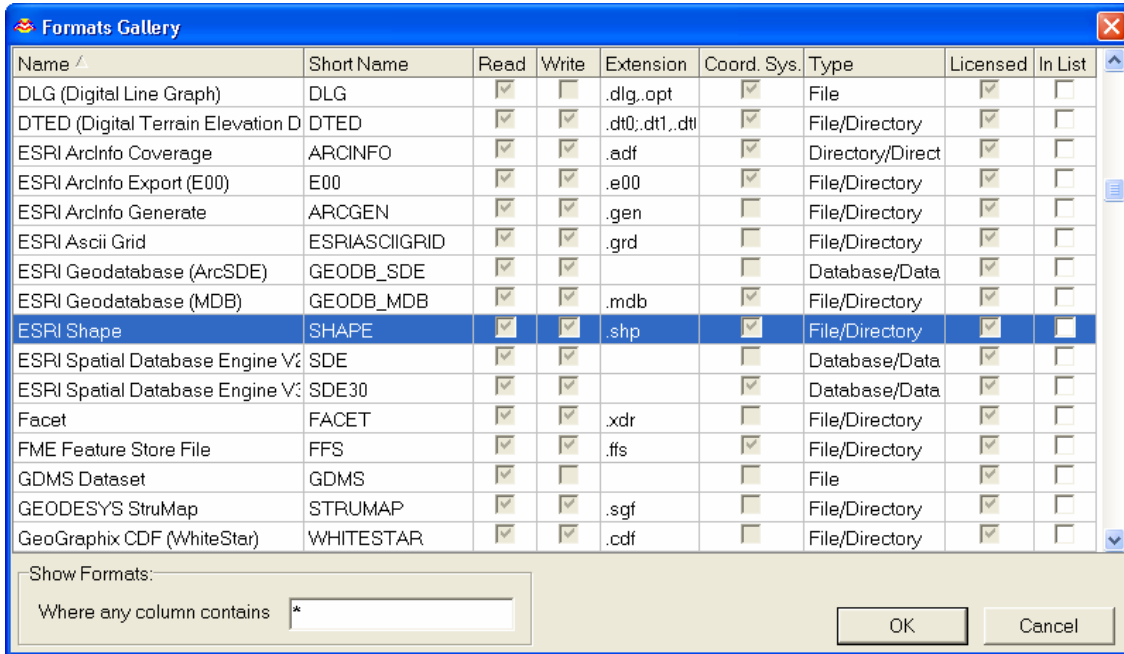


Figure 4.

b. In the **Dataset** dialogue box, navigate to the file to be converted (Figure 5).

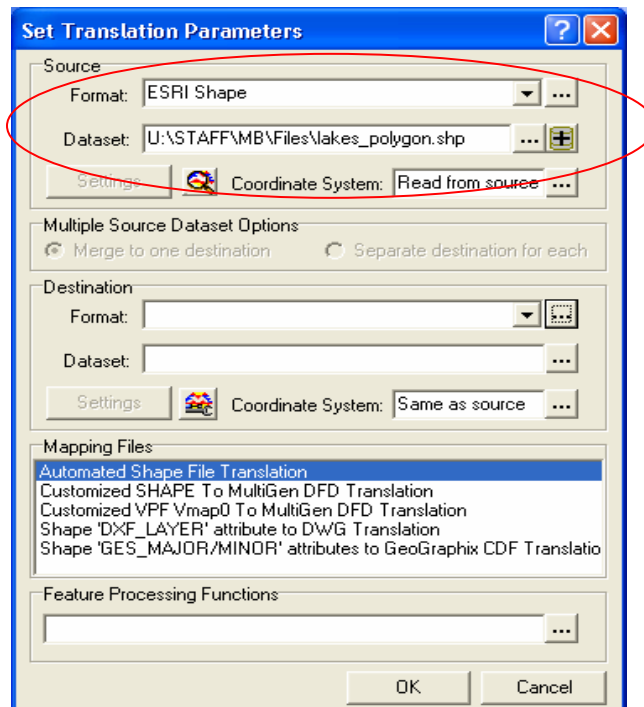


Figure 5.

4. Set up the **Destination** of the file to be converted (Figure 6).

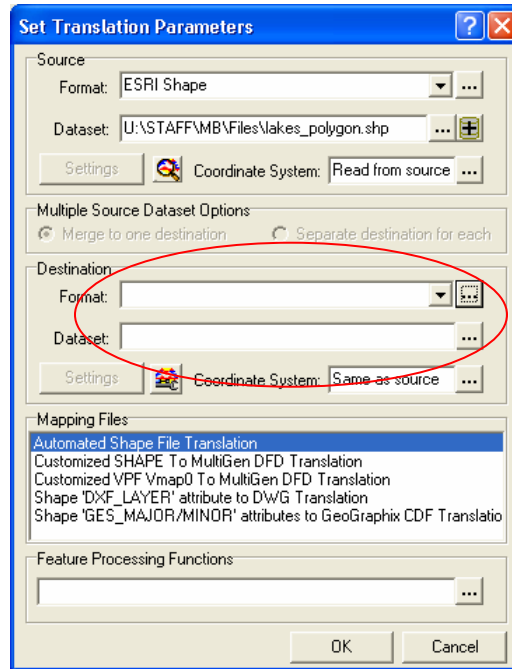


Figure 6.

a. Choose a **format** to convert the file to (Figure 7).

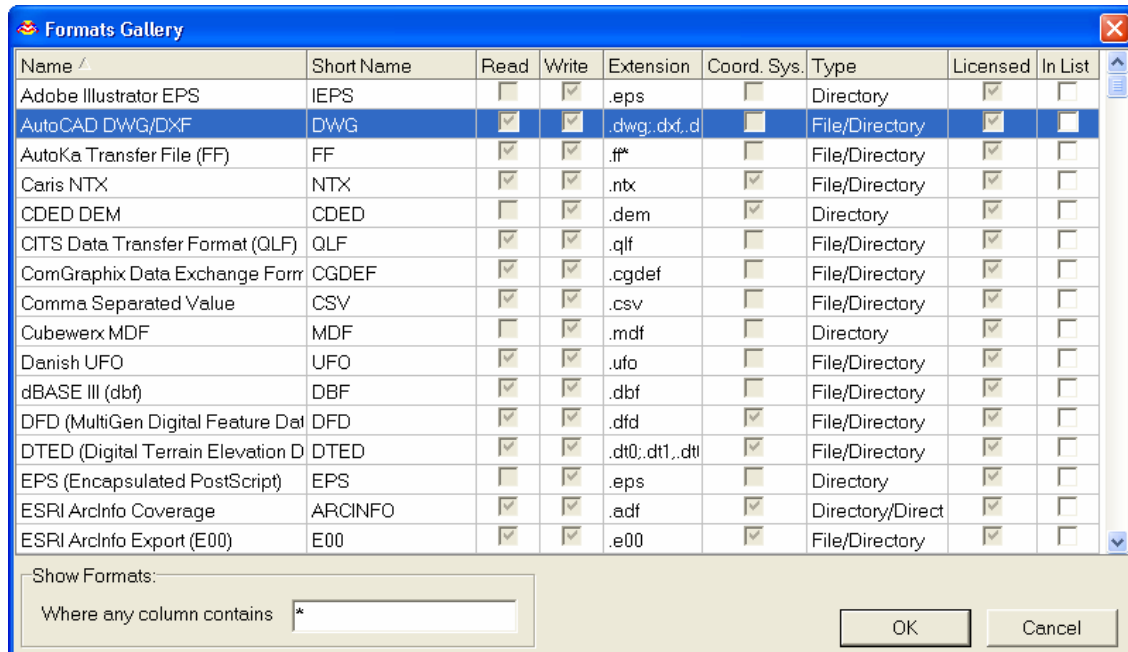


Figure 7.

b. Browse to your project directory and enter a name for the output file (Figure 8).

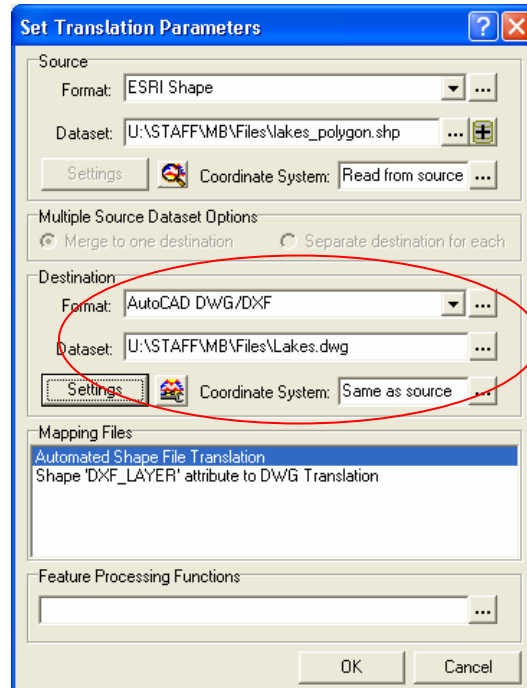


Figure 8.

5. To include the attribute data to the translation, click on the **Setting** button, and in the **Attribute Output** field, mark **Inserts**, then OK (Figure 9).

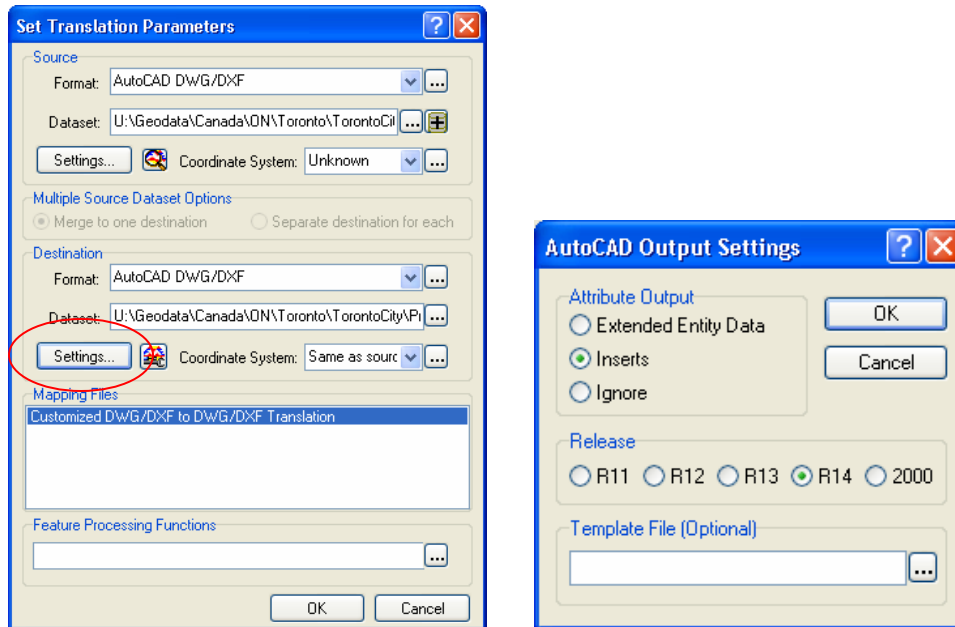


Figure 9.

6. In **Set Translation Parameters** window, Click OK to start the translation. Figure 10 displays the translation information as the file is being translated.

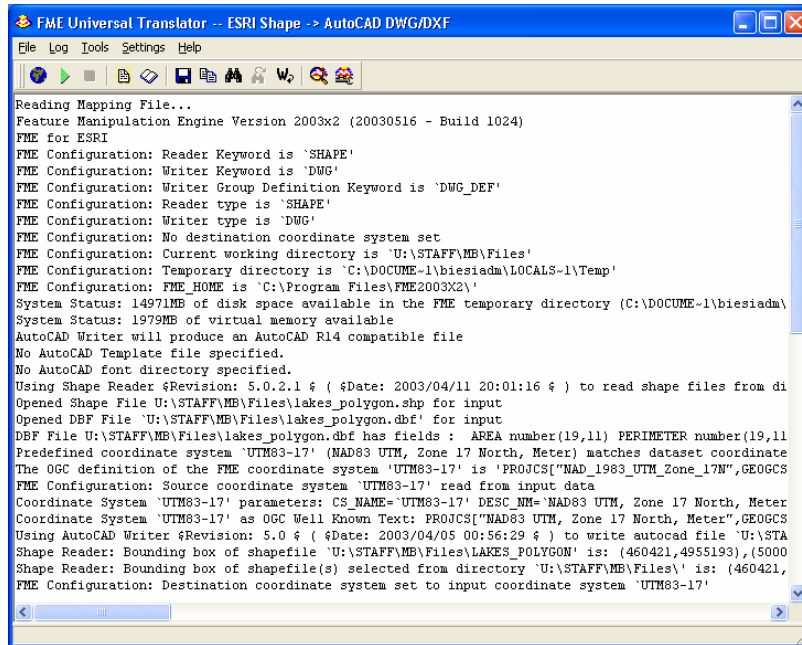



Figure 10.

6. When the translation process is finished, you can preview you new file using FME universal Viewer. Open Universal Viewer using Start the FME Universal Viewer button on the toolbar .

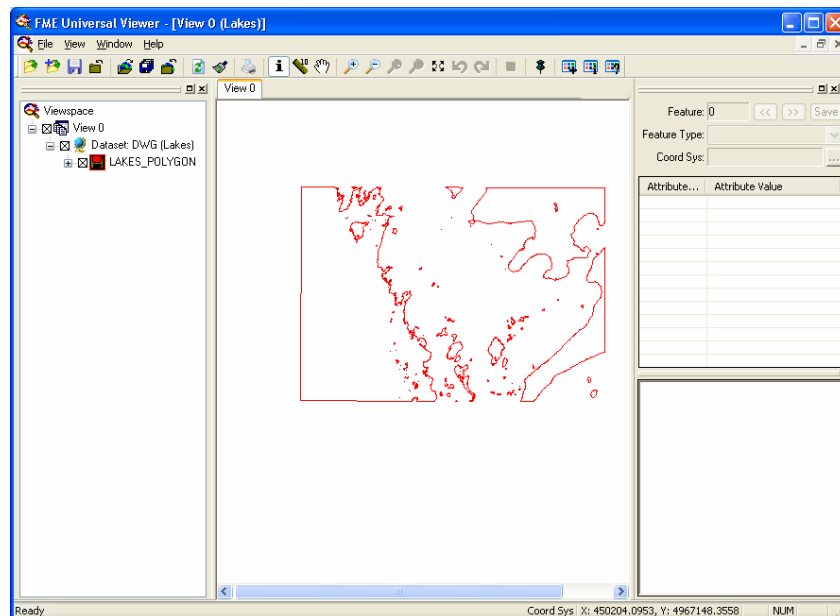


Figure 10.