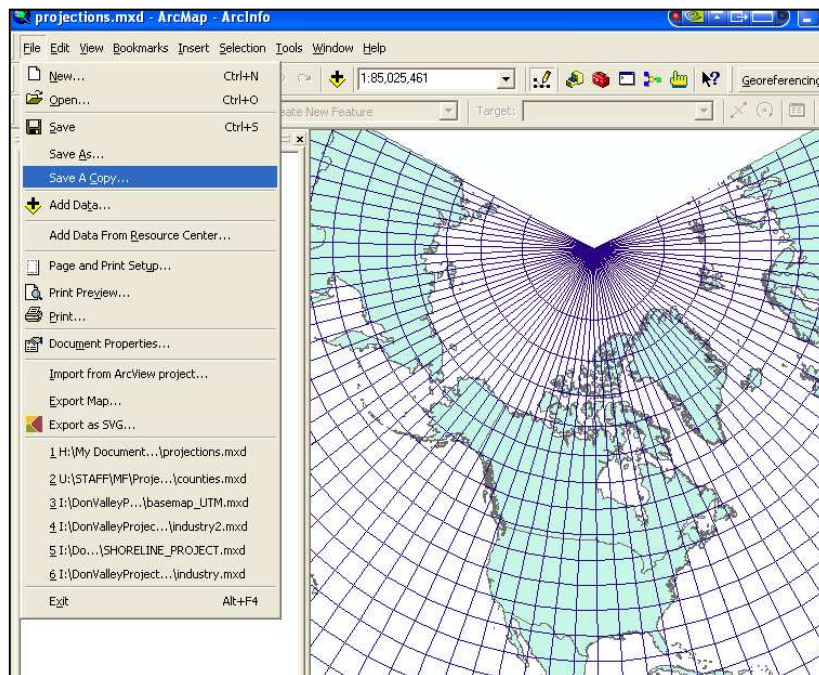


ArcGIS .mxd Help File

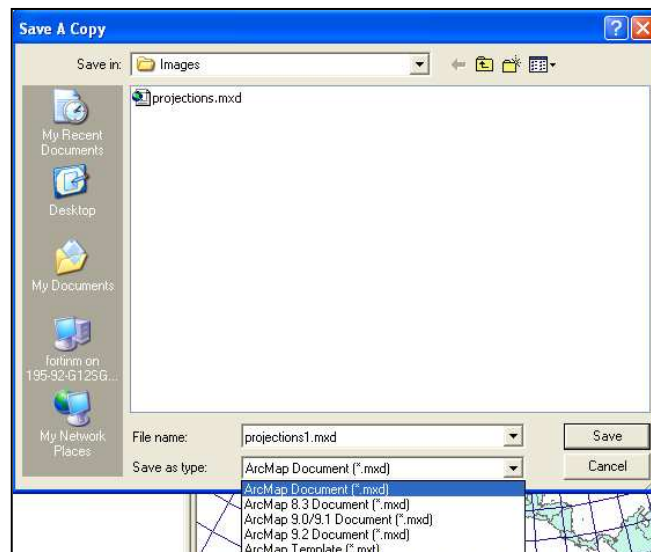
Users of ArcGIS will notice that project files (.mxd) saved in 9.3 will not open in older versions of ArcGIS 9.2 and before. This document will demonstrate how to save projects in older formats within ArcGIS 9.3. Note that the same principal can be used within older versions (9.2, 9.1, 9.0 etc.) to save project files into even older versions such as ArcGIS 8.x.
Saving to an Earlier Version of ArcGIS using ArcMAP 9.3

To save to an earlier version of ArcGIS, such as 9.2:

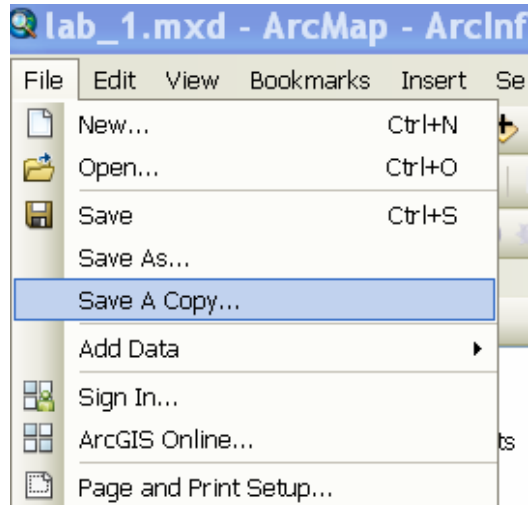
- Go to **File > Save a Copy**



- Choose **Save as type**, then select the version of ArcMap you wish to save to such as **ArcMap 9.2**. Click on Save



To Save an MXD in an earlier version than version 10.x



Then choose the version of ArcMap to save the mxd file

